

Intrada XXV

Johannes Lyttich (1581-1611)
aus "Venus Glöcklein" (1610)

Measures 1-5 of the Intrada XXV. The score is written for five staves: two treble staves, two alto staves, and one bass staff. The key signature is one flat (B-flat). The time signature is common time (C). The music features a variety of note values including eighth, quarter, and half notes, with some rests. The first staff has a repeat sign at the end of measure 5. The second staff has a repeat sign at the end of measure 5. The third staff has a repeat sign at the end of measure 5. The fourth staff has a repeat sign at the end of measure 5. The fifth staff has a repeat sign at the end of measure 5.

6

Measures 6-12 of the Intrada XXV. The score continues with the same five-staff arrangement. The key signature changes to two sharps (F# and C#) in measure 6. The music continues with various note values and rests. The first staff has a repeat sign at the end of measure 12. The second staff has a repeat sign at the end of measure 12. The third staff has a repeat sign at the end of measure 12. The fourth staff has a repeat sign at the end of measure 12. The fifth staff has a repeat sign at the end of measure 12.

13

Measures 13-18 of the Intrada XXV. The score continues with the same five-staff arrangement. The key signature changes to one sharp (F#) in measure 13. The music continues with various note values and rests. The first staff has a repeat sign at the end of measure 18. The second staff has a repeat sign at the end of measure 18. The third staff has a repeat sign at the end of measure 18. The fourth staff has a repeat sign at the end of measure 18. The fifth staff has a repeat sign at the end of measure 18.

18



Measures 18-23 of the musical score. The system consists of five staves. The first four staves are treble clefs, and the fifth is a bass clef. The key signature is one flat (B-flat). The time signature is 3/4. The music features a variety of note values including quarter, eighth, and sixteenth notes, as well as rests. The system concludes with a double bar line and repeat dots.

24



Measures 24-29 of the musical score. The system consists of five staves. The first four staves are treble clefs, and the fifth is a bass clef. The key signature is one flat (B-flat). The time signature is 3/4. The music features a variety of note values including quarter, eighth, and sixteenth notes, as well as rests. The system concludes with a double bar line and repeat dots.

30



Measures 30-35 of the musical score. The system consists of five staves. The first four staves are treble clefs, and the fifth is a bass clef. The key signature is one flat (B-flat). The time signature is 3/4. The music features a variety of note values including quarter, eighth, and sixteenth notes, as well as rests. The system concludes with a double bar line and repeat dots.

Intrada XXV

Johannes Lyttich (1581-1611)
aus "Venus Glöcklein" (1610)

Canto I



4



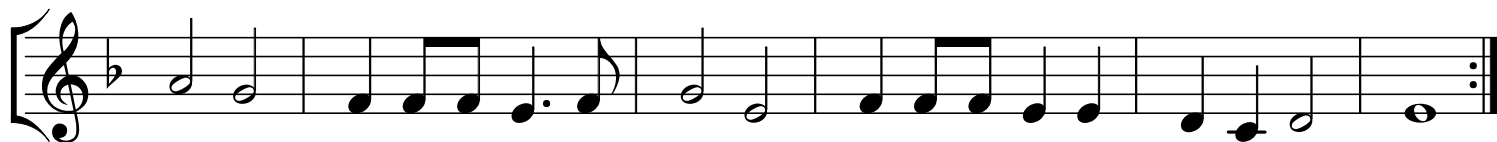
8



13



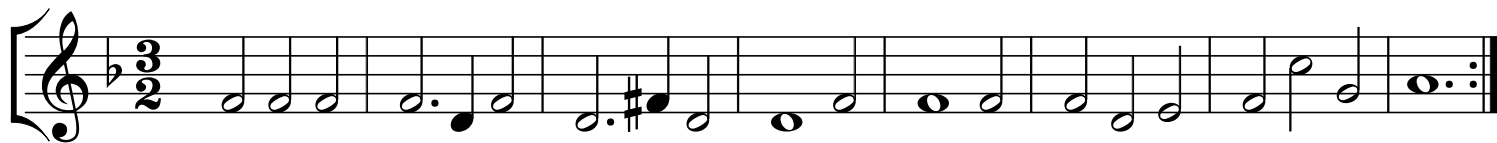
18



24



30



Intrada XXV

Johannes Lyttich (1581-1611)
aus "Venus Glöcklein" (1610)

Canto II



4



8



13



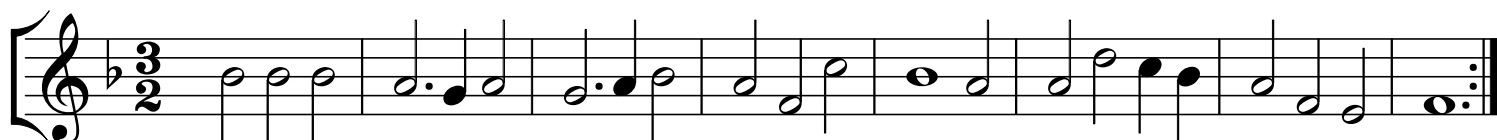
18



24



30



Intrada XXV

Johannes Lyttich (1581-1611)
aus "Venus Glöcklein" (1610)

Altus

8

6

Musical notation for Exercise 6, featuring a treble clef, a key signature of one flat (B-flat), and a common time signature (C). The melody consists of eighth notes and quarter notes, ending with a double bar line and repeat dots. A small number '8' is written below the first measure.

13

8

18

Musical notation for measure 18, starting with a treble clef and a key signature of one flat (B-flat). The melody consists of eighth notes and quarter notes, ending with a double bar line and repeat dots.

24

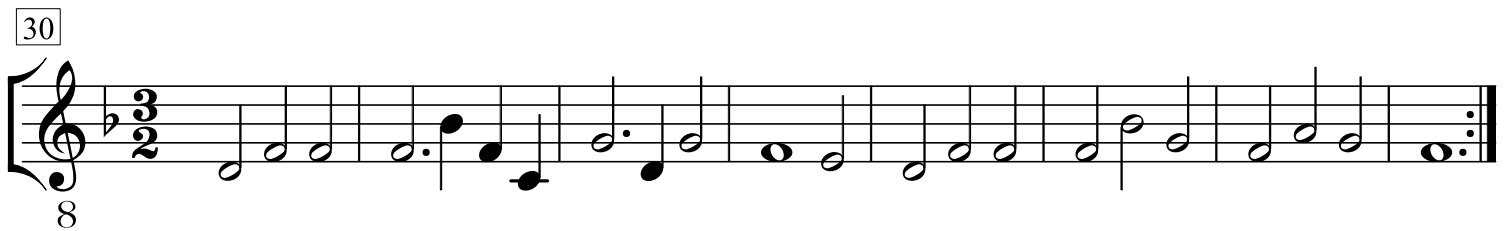
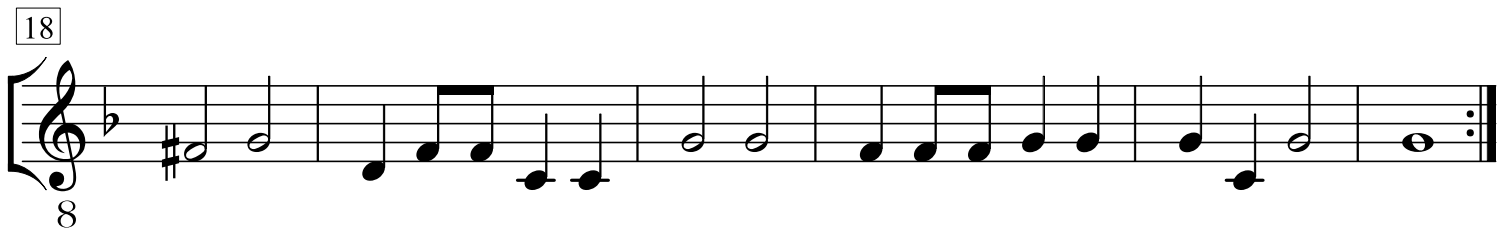
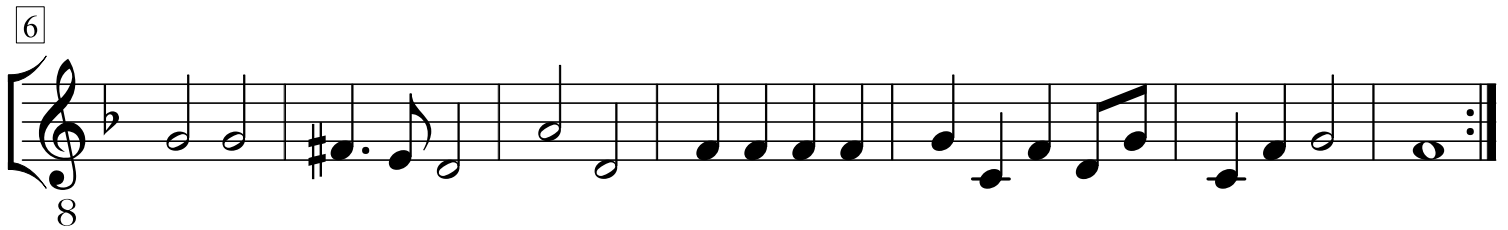
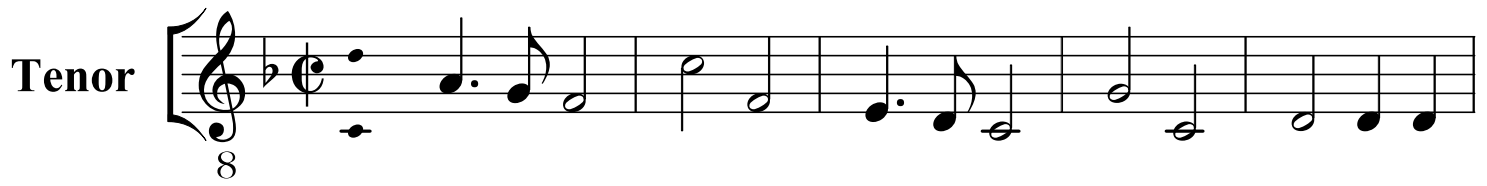
8

30

8

Intrada XXV

Johannes Lyttich (1581-1611)
aus "Venus Glöcklein" (1610)



Intrada XXV

Johannes Lyttich (1581-1611)
aus "Venus Glöcklein" (1610)

